

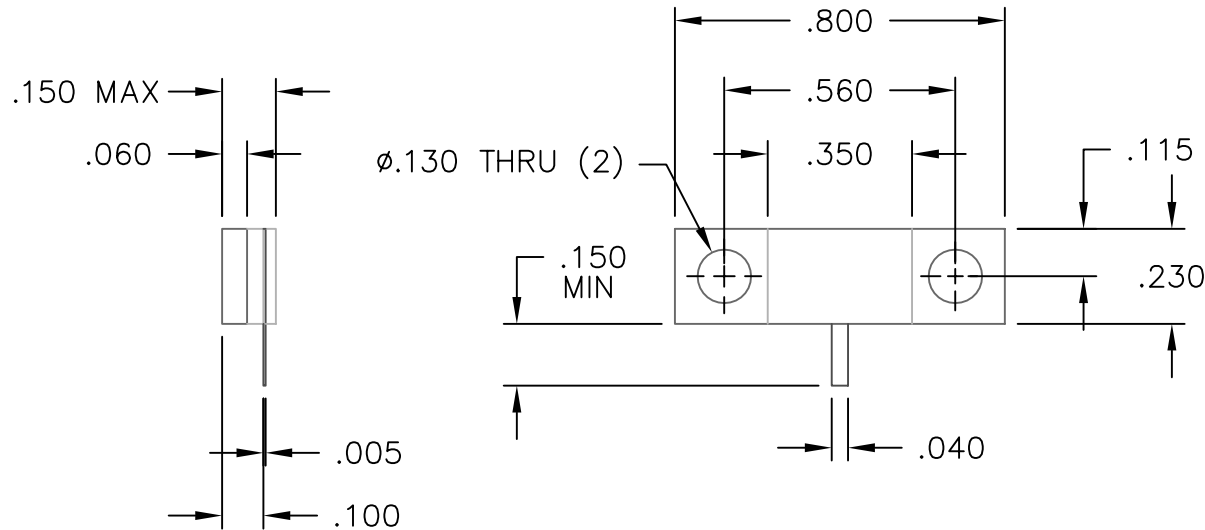
CAD#321055A2

DRAWING NO.

32-1055

REV.

A



MATERIALS:

FLANGE: COPPER PER ASTM B301
 SUBSTRATE: BERYLLIUM OXIDE
 TAB: BERYLLIUM COPPER PER QQ-C-533
 COVER: ALUMINA OXIDE
 RESISTIVE FILM: NICHROME

FINISH:

FLANGE: NICKEL PER QQ-N-290
 TAB: TIN PER MIL-T-10727

A	DCN#0493	1/97	
REV.	DESCRIPTION	DATE	APPR.

UNLESS OTHERWISE SPECIFIED

- DIMENSIONS ARE AFTER PLATING
- DIAMETERS ON COMMON Q_L TO BE CONCENTRIC WITHIN _____ T.I.R.
- SURFACE ROUGHNESS 63/√
- CORNERS AND EDGES .005 R. MAX.
- REMOVE BURRS AND BREAK SHARP EDGES

TOLERANCES

DECIMAL	FRACTION	ANGLES
.X ±		
.XX ±	±	± _____
.XXX ±	.010	

ALL DIMENSIONS ARE IN INCHES

REFERENCE		
CATALOG		
MATERIAL		
FINISH		
SCALE	CAGE CODE ID NO.	SIZE
2X	2Y194	A
APPR.	CHK	

	P.O. BOX 899 STUART, FL. 34995	
	TITLE TERMINATION, FLANGE MOUNT, 100 WATT	
DRAWING NO.	REV.	
32-1055	A	
DRAWN PSC	SHEET 1	OF 2
9/12/94		

CAD#321055A3

DRAWING NO.

32-1055

REV.

A

REQUIREMENTS	RATING	REQUIREMENTS	RATING														
NOMINAL IMPEDANCE (OHMS)	50 OHMS	VIBRATION	MIL-STD-202 METHOD 204 COND. D (20 G's)														
FREQUENCY RANGE (GHz)	DC- 6.0 GHz																
TEMPERATURE COEFFICIENT	LESS THAN 200 PPM	SHOCK	MIL-STD-202 METHOD 213 COND. 1 (100 G's)														
OPERATING TEMPERATURE (°C)	-55 TO +150																
VSWR	1.30:1 MAX	TEMPERATURE CYCLING	MIL-STD-202 METHOD 102 COND. C (-65 TO +125 ° C)														
AVERAGE POWER (WATTS)	100	TERMINAL STRENGTH	MIL-STD-202 METHOD 211 COND. A														
DC RESISTANCE	50 OHMS ± 5%																
		MOISTURE RESISTANCE	MIL-STD-202 METHOD 106 LESS STEP 7B														
		SOLDERABILITY	MIL-STD-202 METHOD 208														
		RESISTANCE TO SOLDER HEAT	MIL-STD-202 METHOD 210 COND. A														
<p style="text-align: center;"><u>AVERAGE POWER DERATING</u></p> <table border="1"> <caption>Average Power Derating Data</caption> <thead> <tr> <th>Case Temperature (°C)</th> <th>% of Rated Power</th> </tr> </thead> <tbody> <tr> <td>25</td> <td>100</td> </tr> <tr> <td>50</td> <td>100</td> </tr> <tr> <td>75</td> <td>100</td> </tr> <tr> <td>100</td> <td>100</td> </tr> <tr> <td>125</td> <td>50</td> </tr> <tr> <td>150</td> <td>0</td> </tr> </tbody> </table>		Case Temperature (°C)	% of Rated Power	25	100	50	100	75	100	100	100	125	50	150	0		
Case Temperature (°C)	% of Rated Power																
25	100																
50	100																
75	100																
100	100																
125	50																
150	0																
TITLE TERMINATION, FLANGE MOUNT 100 WATT	P.O. BOX 899 STUART, FL. 34995	DRAWN PSC 9/12/94	DRAWING NO. 32-1055	REV. A													
		SHEET 2 OF 2															